





**Safety, Efficiency,  
Quality *and* Speed**



our

# PROJECTS

06	335 Apartments in 3 Blocks
08	Human Evolution Museum
10	Axor Hotels
12	Luise-Kiesselbach-Tunnel
14	New ESO Headquarter
16	Airport Terminal 2 Satellite
18	E6 Tunnel FP2 Dovrebanen
20	Kuka
22	Freisinger Landstrasse
24	Tunnel Widderstall
26	Manhattan Loft Gardens
28	Hovinenga
30	Other Projects



we are

# TURBOCONSTROI

Since the beginning of its establishment in 2004, Turboconstroi is directed to build concrete structures with high quality finishing, delivering them on time with the highest efficiency. One of the most important parts of the company is to guarantee and to implement a human resources policy appropriate to the demands and Laws of the Europeans markets in order to provide the workers with a proper security and safety to obtain the highest productivity.

With a consolidated presence in the domestic and Spanish market, Turboconstroi extended its range of services to the German market in 2010, with the gained "know-how" needed to face different challenges sustained with an organic growth, supported by local partnerships and alliances it developed to the Norwegian market in 2013 and a year later to the English market.

The Future is mainly driven by continued growth in the international market and by consolidating our presence in the countries where we are currently working. It is in the new, different and daring challenges that the company finds an excellent opportunity to demonstrate and potentiate its slogan:

**“Safety... Efficiency... Quality... and Speed...”**



**2006**  
**BURGOS, SPAIN**

**335**  
**Apartments**  
**in 3 Blocks**

**Residential Buildings** - This Project includes three buildings in “U” shape with an underground car park. The works consist in an implementation of a concrete structure and Masonry Works. In total 65.000 square meters Formwork were used, 11.900 cubic meters of Concrete were poured, 1.190 tones reinforcement was applied and 22.000 square meters masonry Brick walls were erected.





2007  
BURGOS, SPAIN

## Museum Of Human Evolution

**Industrial and Commercial Building** - The Project is divided in an Exhibition/Congresses Building and the Archaeological Research Centre build on a 15.000 square metres Lot. The works consists in an implementation of a concrete structure and Masonry Works, in total 23.400 square meters Formwork were used and 7.000 cubic meters of Concrete were poured.





2008  
MADRID, SPAIN

## Hotel Axor Barajas and Hotel Axor Feria

Commercial Building - This Project is divided in 2 similar Hotels both with 285 rooms. The works consist in an implementation of a concrete structure and Masonry Works, in total 26.500 square meters. Formwork were used and 6.500 cubic meters of Concrete were poured.

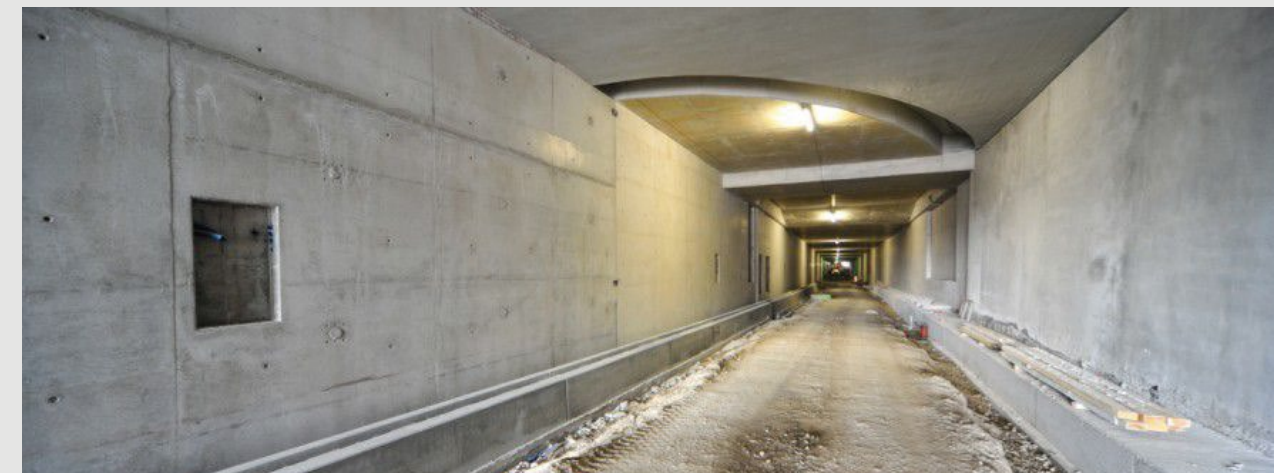




2010  
MUNICH, GERMANY

## Luise- Kiesselbach- Tunnel

Civil Works - Road tunnel with a length of 2,8 km, it has an area of 68.000 square meters, divided in three tunnels including 4 Operating Stations, 4 Pumping Stations and 15 Emergency Exits to the surface. The works consists in an implementation of a concrete structure according to the technical "cut-and-cover" and in the open excavation method. In total 160.000 square meters Formwork were used and 140.000 cubic meters of Concrete were poured.





2012  
GARCHING, GERMANY

## ESO New Headquarters Building

Office and Industry Building - The new Office/Conference Building of 10.300 square metres and the Technical Building of 2.900 square metres consists of three circular building compartments (A, B and C). The works consists in an implementation of a concrete structure, in total 38.000 square meters Formwork were used and 8.000 cubic meters of Concrete were poured.





2012  
MUNICH, GERMANY

## Airport Terminal 2 Satellite

**Industrial and Commercial Building** - This Project includes a new Building of 125,000 square metres and 12 Passenger Boarding Bridges. The Building is 600 meters long and more than 50 meters wide. The works consists in an implementation of a concrete structure, in total 117.000 square meters Formwork were used and 44.000 cubic meters of Concrete were poured.





**2013**  
**DOVREBANEN, NORWAY**

**E6**  
**Tunnel FP2**  
**Dovrebanen**

Civil Works - High-speed railroad Tunnel with approximately 6,5 km; Inner lining works with an implementation of a concrete structure and Reinforcement works. Including the niches and technical buildings. In total 120.000 cubic meters of Concrete were poured and more than 1000 tones reinforcement was applied.





2014  
AUGSBURG, GERMANY

## KUKA Development and Technology Center

Office Building - The Project is a new Building of 27,000 square metres. The works consists in an implementation of a concrete structure and Masonry Works, in total 75.000 square meters Formwork were used and 22.000 cubic meters of Concrete were poured.





**2014**  
**MUNICH, GERMANY**

## **Freisinger Landstrasse „Am Mühlbach“**

Residential Buildings - The Project includes 11 individually designed houses, with 137 condominiums on a 12 000 square metres Lot. The works consists in an implementation of a concrete structure and Masonry Works, in total 73.000 square meters Formwork were used and 15.000 cubic meters of Concrete were poured.





2014  
WIDDERSTALL, GERMANY

## Tunnel Widderstall

Civil Works - High-speed two-track railroad Tunnel with a length of 962 meters with an area of 15.000 square metres; Inner lining works with an implementation of a concrete structure in the "cut-and-cover" method in a total of 93 in-situ concrete blocks and 2 Portal Blocks. In total 42.000 cubic meters of Concrete were poured.

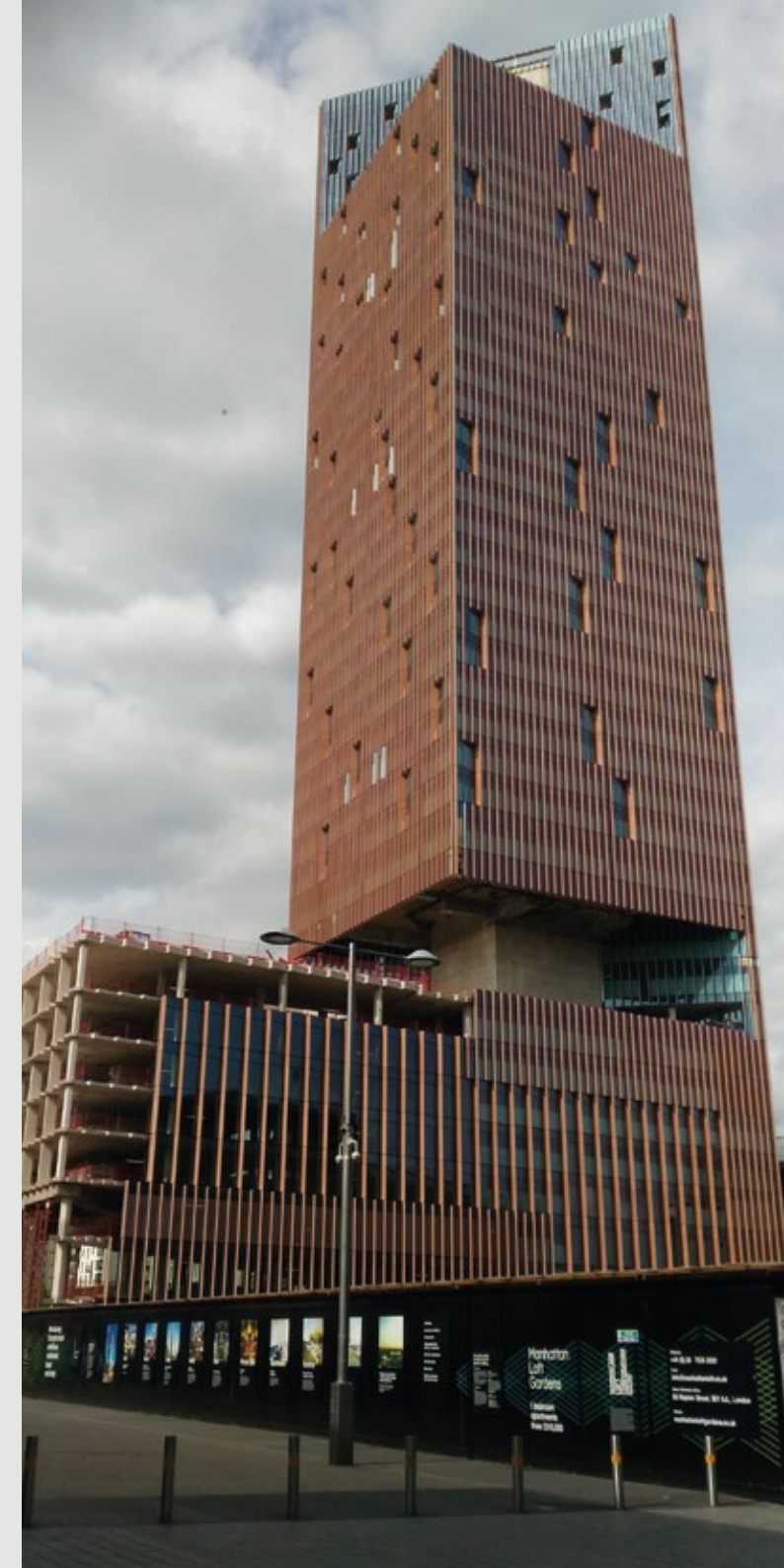




2015  
LONDON, ENGLAND

## Manhattan Loft Gardens

**Residential and Commercial Building** - The Project is a new Tower Building 143 metres tall, 42-storey high, including 248 apartments and a 150 room hotel. The works consists in an implementation of a concrete structure and Reinforcement works, in total 79.000 square meters Formwork were used; 26.000 cubic meters of Concrete were poured and more than 1000 tones reinforcement was applied.





2016  
OSLO, NORWAY

## Hovinenga

Residential Buildings - This Project includes 355 Apartments divided into four houses. The works consist in an implementation of a concrete structure and Masonry Works, in total 64.000 square meters Formwork were used and 12.250 cubic meters of Concrete were poured.





other

## PROJECTS:

### PORTUGAL

Escola Integrada D. Nuno Álvares Pereira (Tomar) Aquapólis, Parque Ribeirinho de Abrantes (Abrantes) Requalificação e Ampliação da Escola Eb1 De Tramagal (Tomar) Aquapólis de Tomar (Tomar) Mercado Municipal de Abrantes (Abrantes) 5 Vivendas Geminadas - Green and Orange Houses (Marco de Canaveses).

### SPAIN

25 Chalets Adosados (Burgos) 28 Viviendas Unifamiliares (Villalmanzo) 246 Vivendas (Burgos) 44 Viviendas (Burgos) 25 Chalets Adosados (Burgos) Edificio de Oficinas Nicolas Correa (Burgos) 21 Viviendas (Villimar) 43 Viviendas Unifamiliares (Valladolid) 64 Viviendas Unifamiliares (Burgos) 212 Viviendas (Villalbilla De Burgos) 16 Chalets Unifamiliares (Villalbilla de Burgos) 212 Viviendas (Villalbilla De Burgos) Mercado de Abastos de la Zona Sur de Burgos (Burgos) 100 Viviendas (Cellophane, Burgos) Edificio de Servicios Administrativos (Burgos University) 168 Viviendas (Puertas Europa, Burgos) 58 Viviendas (Bakimet, Burgos) 68 Viviendas (Barriada del Pilar, Burgos) Nave en la Aduana de Burgos (Burgos) Conservatorio de Música Y Danza de Burgos (Burgos) 24 Viviendas (Villalbilla De Burgos) 50 Viviendas (Villalbilla de Burgos) Reforma Residencia Ancianos (C. Princesa, Madrid) 66 + 43 + 34 + 90 Viviendas (Miranda De Ebro) 176 Viviendas Unifamiliares (Lerma) 84 + 43 + 47 Viviendas (Burgos) Estación Intermodal de Miranda de Ebro (Miranda de Ebro) Polideportivo Caja Circulo (Burgos) Centro Educativo Infantil (Burgos) Ampliación Unidades Y Servicios Complementarios (Pancorbo) Centro Cívico Miranda de Ebro (Miranda de Ebro) Aparcamiento Subterráneo Reyes Catolicos (Zamora) Bodega Dominio del Cair (Aranda Del Duero) 18 Viviendas C/ Cordón (Burgos) Auditorio (Burgos) Reforma Hospital San Juan de Dios (Burgos) Modulo Cubierto de Atletismo de San Amaro (Burgos) Sede Central del Museo de la Energia (Leon).

### GERMANY

Studentenwohnheim, Leopoldstrasse 250 (Munich) Studentenwohnheim, George Wopfner Str. 3 (Munich) Neubau Eines Studentenwohnheimes Mit Tg (Munich) European 7 New, Ulm (Ulm) Münchener Bürgerheim (Munich) Norderweiterung Flughafen (Munich) Freizeitbad Sinsheim (Sinsheim) Nymphenburger Str. 40 (Munich) Astro, Max, Plankc, Insitut Garching (Munich) Bürogebäude Berliner Strasse 95 (Munich) Swiss Life Deutschland (Munich) Neubau Geschäftshaus, Kaufinger Strasse 11 (Munich) Gesundheitszentrum Giesing (Munich) Tunnel Widderstall (Stuttgart) Mozartring (Dorfen) Hage (Erding) Polschak (Gronsdorf) Kolbingerstrasse 8 (Haag).

### NORWAY

Lokalmedisinsk Senter I Sandefjord (Sandefjord) Statoil Harstad (Harstad) Luhr Skole Og Framtia Barnehage (Lørenskog) Bromstadveien 59 (Trondheim) Sundheim Bo- Og Treningssenter (Vinstra) Comfort Hotel Bergen Airport (Flesland) Holmestrandporten (Holmestrand) Lmb Hammerfest (Hammerfest) Follo Line Project – Epc Contract (Oslo) 98 Leiligheter Fordelt På Tre Blokker (Jessheim) Bjørkelangen Skole (Bjørkelangen) Rauma Helsehus (Åndalsnes) Vålerenga Kultur Og Idrettspark (Oslo) Fornebuporten 2 (Fornebu) Fram 2, Tromso (Tromso) Aukra Omsorgssenter (Aukra) Ny Alvdal Barneskole (Alvdal) Landsforeningen For Hjerte- Og Lungesyke (Gardermoen) Hønefoss Sør 1-7 (Hønefoss) Mjøs Parken (Hamar) Ilseterlia Trinn 3 (Øyer).

### ENGLAND

Radipole Court (Dorset) Uclh Phase 4 And Proton Beam Therapy Unit (London).

## CONTACT US

### Portugal Germany

**Turboconstroi - Sociedade de Construções, Lda**  
Praceta das Quintas nº151 e 153 R/C  
4625-057 Bem Viver - Portugal  
GPS: 41.113229, -8.213802  
Phone: +351 255 588 937  
Fax: +351 255 588 801  
E-mail: portugal@turboconstroi.com

**Turboconstroi GmbH**  
Albert-Roßhaupter-Straße 62,  
81369 München - Germany  
GPS: 48.116966, 11.530431  
Phone: +49 (0) 1 632 503 638  
E-mail: deutschland@turboconstroi.com

### Spain England

**Turboconstroi - Sociedade de Construções, Lda**  
Calle Alfonso X el Sabio, 1, - 1º B  
09001 Burgos – Spain  
GPS: 42.347963, -3.695835  
Phone: +351 255 588 937  
E-mail: espana@turboconstroi.com

**Turboconstroi UK LTD**  
145-157 St. John Street  
London EC1V 4QJ - United Kingdom  
GPS: 51.523432, -0.102629  
Phone: + 44 (0) 7789 144217  
E-mail: england@turboconstroi.com

### Norway

**Turboconstroi Norge AS**  
Brynsveien 18,  
0667 Oslo - Norway  
GPS: 59.912524, 10.810649  
Phone: +47 976 434 80  
E-mail: norge@turboconstroi.com

Save contact







[www.turboconstroi.com](http://www.turboconstroi.com)